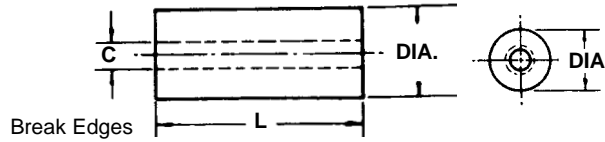


## ROUND SPACERS



LENGTH	PART NO.					
	1/8" DIA	3/16" DIA	1/4" DIA	5/16" DIA	3/8" DIA	1/2" DIA
SCREW SIZE: NO.	2	2,4	2,4,6,8	4,6,8,10	6,8,10	6,8,10,12,1/4
1/8	9200	9207	9222	9284	9315	9253
3/16	9201	9208	9223	9285	9316	9254
1/4	9202	9209	9224	9286	9317	9255
5/16	9203	9210	9225	9287	9318	9256
3/8	9204	9211	9226	9288	9319	9257
7/16	9205	9212	9227	9289	9320	9258
1/2	9206	9213	9228	9290	9321	9259
9/16		9214	9229	9291	9322	9260
5/8		9215	9230	9292	9323	9261
11/16		9216	9231	9293	9324	9262
3/4		9217	9232	9294	9325	9263
13/16		9218	9233	9295	9326	9264
7/8		9219	9234	9296	9327	9265
15/16		9220	9235	9297	9328	9266
1		9221	9236	9298	9329	9267
1-1/16			9237	9299	9330	9268
1-1/8			9238	9300	9331	9269
1-3/16			9239	9301	9332	9270
1-1/4			9240	9302	9333	9271
1-5/16			9241	9303	9334	9272
1-3/8			9242	9304	9335	9273
1-7/16			9243	9305	9336	9274
1-1/2			9244	9306	9337	9275
1-9/16			9245	9307	9338	9276
1-5/8			9246	9308	9339	9277
1-11/16			9247	9309	9340	9278
1-3/4			9248	9310	9341	9279
1-13/16			9249	9311	9342	9280
1-7/8			9250	9312	9343	9281
1-15/16			9251	9313	9344	9282
2			9252	9314	9345	9283

Note: Maximum and minimum I.D. on all standard Amatom spacers will conform to clearance hole range Chart No. 4 shown on page 5.

Note: All spacers can be supplied in hex or square materials.

Refer to page 8 for Finish Codes.

Please contact sales office for parts not listed.

### PART NUMBER ORDERING SYSTEM

**XXXX - X - XXX - XX**

|  
 PART NO. | CLEARANCE HOLE CODE  
 |  
 MATERIAL | FINISH

### SCREW SIZE/I.D. CODE

No.	I.D.	Code	No.	I.D.	Code
2	.091	091	10	.194	194
4	.115	115	12	.219	219
6	.140	140	1/4	.257	257
8	.171	171			

MATERIAL	CODE
Aluminum	A
Brass	B
Steel	S
Stainless Steel	SS
Nylon	N
Phenolic (not available in 1/8")	PH

5 Pasco Hill Road • Cromwell, CT 06416-1093  
 Phone: 860-828-0847 • Call Toll Free: 800-243-6032 • Fax: 860-828-0381  
 Web Address: <http://www.amatom.com> • E-Mail: [sales@amatom.com](mailto:sales@amatom.com)